



**Static Front Straps**  
QHDLRF, WWR/LRF, SF/QHD, SF/QE

**USER OPERATING INSTRUCTIONS**



**Read instructions fully before use.**

**It is recommended that training be given on the proper use of this product.**

**Retain this manual for future reference.**

**Include it with the product in the event of transfer to new users.**

**Additional copies are available upon request.**

Unwin House, The Horseshoe, Coat Road, Martock  
Somerset, UK  
Tel: +44 (0)1935 827740 Fax: +44 (0)1935 827760  
Email: [sales@unwin-safety.co.uk](mailto:sales@unwin-safety.co.uk)  
[www.unwin-safety.com](http://www.unwin-safety.com)

© 2007 C.N. UNWIN LTD. ALL RIGHTS RESERVED

UI1592A



# CONTENTS

- A. Limitations of Use
- B. General Guidance
- C. Before using the restraint
- D. Fitting front straps with ATF
- E. Fitting front straps with Solo
- F. Removing and Storing
- G. Maintenance
- H. Product Range

## A. LIMITATIONS OF USE

1. **This product has been designed as a front tiedown only, so a separate rear tiedown must be used for the rear of the wheelchair.**
2. **An independent occupant restraint must always be used for the seat occupant.**
3. Some wheelchairs need specific restraints, i.e. Buggy type wheelchairs. If in doubt please contact Unwin or the wheelchair manufacturer.
4. Some wheelchair frames are too large for the Karabiner to close around them. In these situations our D-ring straps (DR120) or an alternative restraint system should be used.
5. Unwin products are extensively tested using Unwin Rail and our full warranty applies to Unwin equipment fitted and used in accordance with our instructions. Unwins have also participated in test programs with other manufacturers and will support warranty on the Unwin products when used in conjunction with such jointly tested systems. For further details on specific applications please contact the Sales Office. In other situations where Unwin has not participated in joint test programs, a limited Unwin warranty will apply.

## B. GENERAL GUIDANCE

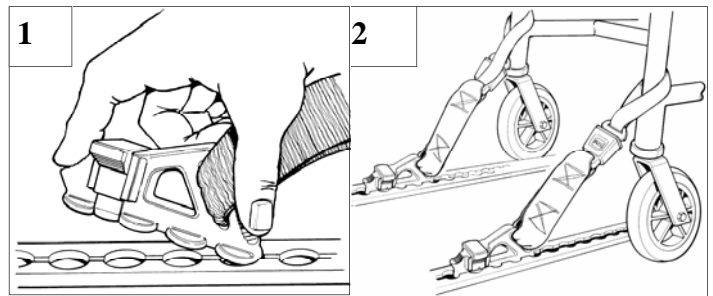
1. Please read this manual before using the equipment.
2. Regular inspection of all parts is recommended and the equipment should be used only if all components are in good condition.
3. Replace equipment when the webbing becomes cut, contaminated or frayed.
4. Any restraints which have been subjected to a crash situation should, in the interest of safety, be replaced immediately.
5. Do not attempt to modify the equipment. If there is a problem please contact Unwin Safety Systems.
6. Avoid contact with corrosive liquids and keep the webbing away from sharp edges. Care should be taken to prevent contamination of the webbing with polishes, oils and chemicals.
7. If the proposed installation cannot be made to comply with the following requirements, please contact Unwin Safety Systems.

## C. BEFORE USING THE RESTRAINT

1. Ensure that the wheelchair is appropriate for the tiedown being used.
2. Position the wheelchair, facing forward, centrally over the Unwin rail with the brakes applied and the wheelchair cannot roll.
3. To minimise the potential for head injuries in an impact, it is recommended to allow a clear space of at least 400 mm behind and 650 mm for 3 point systems or 950mm for 2 point systems in front of the head of the wheelchair user when positioning the chair for transit. A height provision ranging from 1200mm to 1550mm should be made, depending on the size of the passenger. There should also be 200 mm of clear space either side of the wheelchair centre line. If these clear space dimensions cannot be provided then any structure protruding into this space should be adequately padded.
4. Electric wheelchairs may require an additional strap to secure the batteries.

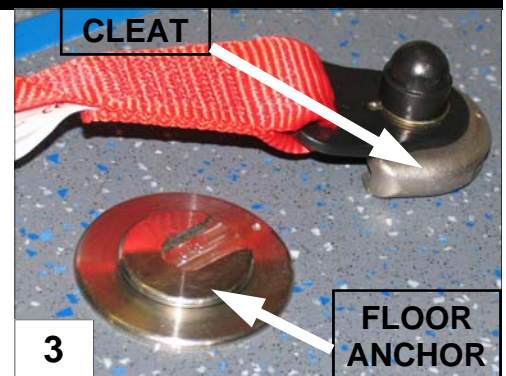
## D. FITTING THE FRONT STRAPS ON RAIL

1. To attach the front straps into rail, match the feet on the clip with the cut-out sections of the rail and insert into it (Fig 1).
2. Move the clip slightly backwards or forwards until the yellow plunger drops and locks into the rail.
3. Install the second clip. The position of this must be in line with the first. **IMPORTANT: Check the plungers are fully engaged on both sides.**
4. With buckles facing outwards, connect the front straps to the front vertical framework of the wheelchair above the front castoring wheels (Fig 2).
5. Pull the wheelchair back to tension front tiedown straps and apply the wheelchair brakes.
6. The rear tiedown should now be fitted. Please refer the appropriate instructions.



## D. FITTING THE SOLO SYSTEM - WHEELCHAIR TIEDOWN

1. Attach the front straps onto the front anchor points by aligning the button within the cleat, to the slot on the floor anchors (Fig 3). Slide the cleat fully home (Fig 4), (this has the effect of raising the floor anchor from its housing). Rotate the assembly through 90° to allow the tongue and buckle fixing to be attached to the wheelchair



2. Connect the front straps around the main frame of the wheelchair (Fig 5). **IMPORTANT: Check both front straps are fully engaged.**
3. Pull wheelchair back, to tension front tiedown straps and apply the wheelchair brakes.
4. The rear tiedown should now be fitted.



## F. REMOVING AND STORING

### ATF Static Front Straps

1. Once the rear tiedown has been removed, release the brakes and push the wheelchair forward to loosen the front straps.
2. Release the buckle on the front straps, remove the strap from the wheelchair frame and clip back together. Repeat on opposite strap.
3. Lift the yellow plunger on the clip and remove the front straps from the rail.

### Solo Static Front Straps

1. Once the rear tiedown has been removed, release the brakes and push the wheelchair forward to loosen the front straps.
2. Release the buckle on the front straps, remove the strap from the wheelchair frame and clip back together. Repeat on opposite strap.
3. Turn the cleat back through 90° to release and slide it off of the floor anchor point.  
Store the restraint safely off the floor to avoid damage and ensure that it would not become a projectile in an accident. This can be achieved by using wall mounted storage rails or a stowage box.

## G. MAINTENANCE

1. Regularly inspect the static front straps for damage, wear or malfunction. If any problems are identified replace them immediately.
2. All webbing and components can be cleaned as necessary, but care should be taken to prevent contamination of the webbing with polish, oils and chemicals.
3. To clean the straps use warm soapy water and a clean soft cloth. Rinse with clear water, and allow to air dry. To disinfect use a mild spray disinfectant and do not use products containing bleach. **IMPORTANT: when cleaning or disinfecting do not immerse buckles or rail fittings in the disinfectant or water.**
4. If the vehicle is involved in an accident when any restraints are deployed, remove them from service and replace immediately. If in doubt please contact Unwin Safety Systems.

## H. PRODUCT RANGE

### Static Front Straps with ATF fixings:

QHD/LRF	Pair of red static front straps for Quattro Systems
WWR/LRF	Pair of black static front straps for Quattro Express Systems

### Static Front Straps with Solo fixings:

SF/QHD	Pair of red static front straps for Quattro Solo Systems
SF/QE	Pair of black static front straps for Solo Quattro Express Systems