



USER OPERATING INSTRUCTIONS

SOLO ANCHOR

SA, SAL, SAS, HVSA, HVLSA

Read instructions carefully before use and follow them for correct use.
It is recommended that training be given on the proper use of this product.

Retain this manual for future reference.

Please include it with the product in the event of transfer to new users.

Additional copies are available upon request.

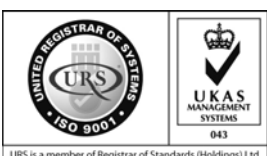
Unwin House • The Horseshoe • Coat Road • Martock •

Somerset • TA12 6EY • UK

Tel: +44 (0)1935 827740 • Fax: +44 (0)1935 827760

Email: sales@unwin-safety.co.uk

Website: www.unwin-safety.com



UI1269B

CONTENTS

- A. Before Installing the Anchorages
- B. Installing the Floor Anchorages
- C. Installing the Wall Anchorages
- D. After installing the Floor Anchorages
- E. Product Range

A. BEFORE INSTALLING THE ANCHORAGES

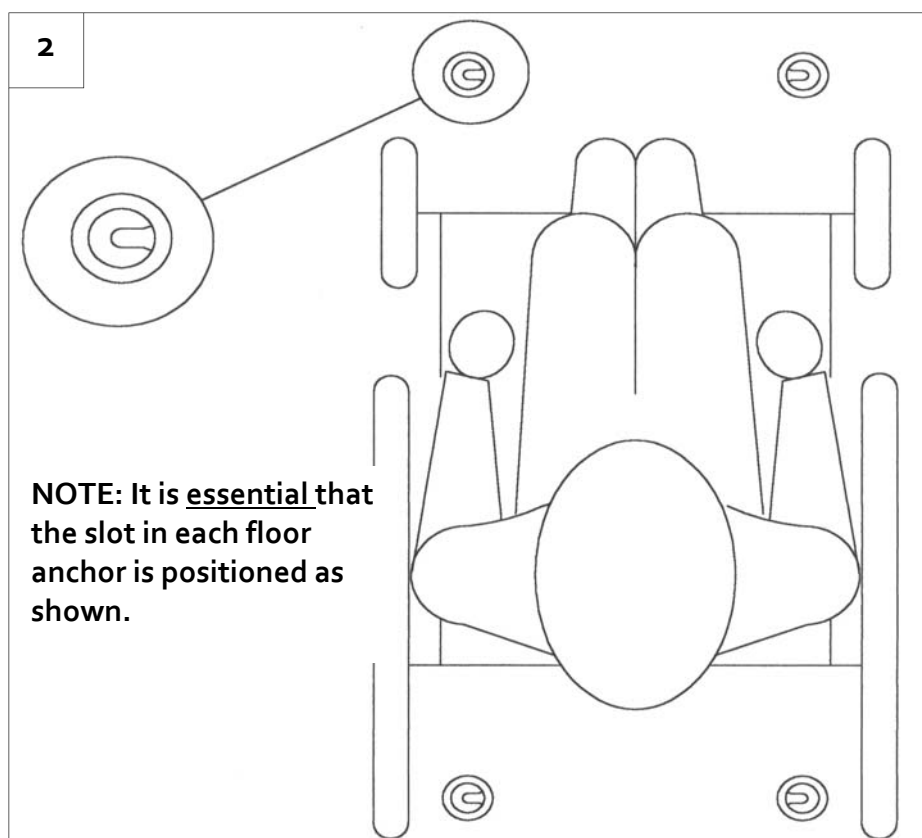
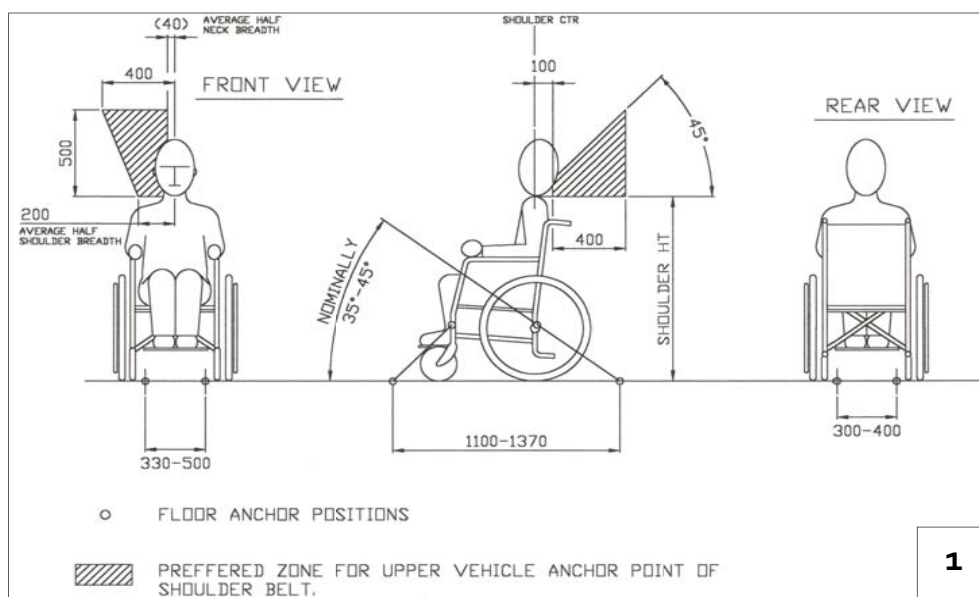
1. Plan where the wheelchair will be located within the vehicle. The wheelchair must be positioned such that the occupant and chair face the front of the vehicle.
2. Ensure sufficient clearance is available to correctly mount and use the upper body restraint harness, (cant rail harness), if applicable.
3. Ensure that plenty of room is allowed for the driver and/or attendant to attach the restraint equipment to the wheelchair and occupant.
4. Based on the likely head excursion that could occur in an impact it is recommended that the floor anchorages are positioned such that a clear space of at least 400mm behind and 650mm in front of the head of the wheelchair user is provided. There should also be 200mm clear space either side of the wheelchair centre line and if these clear space dimensions cannot be provided then any intrusion into the space should be adequately padded.
5. Once happy with the planned wheelchair position, lay the floor anchors in their desired locations and check carefully immediately below the floor, that they and/or the hole cutter will not foul brake lines, fuel tanks, chassis members etc. If in doubt modify the wheelchair or anchorage positions accordingly.
6. **Note:** - To successfully install the floor anchors, the floor thickness must not exceed 45mm.

B. INSTALLING THE FLOOR ANCHORAGES

1. Mark out the chosen floor anchor points, guidance positions are shown in figure 1. Using a 25mm diameter hole saw and pilot drill arbour, or equivalent, cut through the finished floor, ply and steel flooring.
2. Counter bore the 25mm dia. hole to a diameter of 32mm and a depth of 8mm. This can be achieved by using a 'hole rework adaptor' and a 32mm dia. hole saw.
3. Clear debris and install the floor anchors, orientated as shown in Fig 2. Tighten to 30 Nm (Newton metres) from underneath using the nut, washer and under floor spreader plate (if applicable). **Note:** A special Solo wrench is available to hold the floor anchor whilst applying the locking torque. Please contact our Sales Office for details.
4. If you need to modify the spreader plate to clear an obstruction, always leave at least 15mm around the bolt hole. Any modification must be made such that the original load spreading properties are retained.
5. **Note:** It may be necessary to provide fillers between the vehicle floor convolutions to prevent these from being crushed when tightening up on the nuts.
6. It is recommended that some type of body sealant or foam fill is used between the under floor spreader plate and the vehicle under side to prevent ingress of water and subsequent saturation of the ply.

C. INSTALLING THE WALL ANCHORAGE

1. If using a 3 point inertia passenger restraint it will be necessary to install a wall anchorage to the vehicle. This will consist of either a section of surface rail, to allow for adjustment and removal of the 3rd point strap, or, a fixed position anchor plate and strap, secured to the vehicle.
2. **Installing wall rail/fixed position anchor plate.**
3. This should be located and secured to a solid body frame member, in a suitable location in the vehicle, to ensure that the occupant restraint falls within the preferred zone (Fig 1). **It is the responsibility of the installer to ensure that the installation meets all applicable wall strength regulations and requirements.**



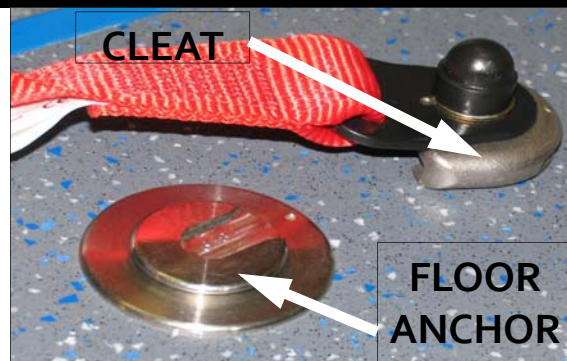
D. AFTER INSTALLING THE FLOOR ANCHORAGES

Check that each floor anchorage is operating correctly by attaching the tie-down strap units to the floor anchors. This is done by aligning the button within the cleat, to the slot on the floor anchors.

Slide the cleat fully home, (this has the effect of raising the floor anchor from its housing). Rotate the assembly through 90° to lock.

If floor anchor is used infrequently, check that the operation of mushroom lift is satisfactory and spray onto stem area with a silicone spray, i.e. WD 40 or similar.

If you have any queries on the installation of this product please contact Unwin Safety Systems.



E. PRODUCT RANGE

- SA: Standard Floor Anchor
- SAL: Long Floor Anchor
- SAS: Short Floor Anchor
- HVSA: High Viz Standard Anchor
- HVLSA: High Viz Long Anchor

Unwin House • The Horseshoe • Coat Road • Martock •
Somerset • TA12 6EY • UK
Tel: +44 (0)1935 827740 • Fax: +44 (0)1935 827760
Email: sales@unwin-safety.co.uk
Website: www.unwin-safety.com